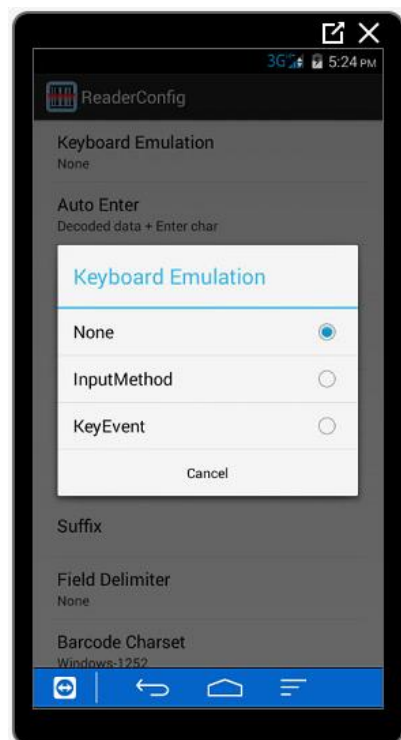
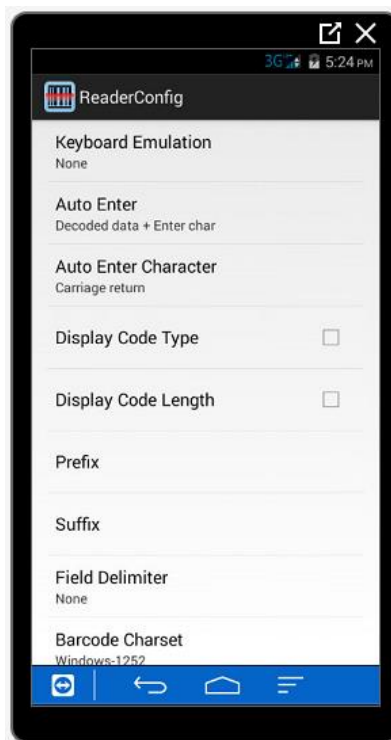
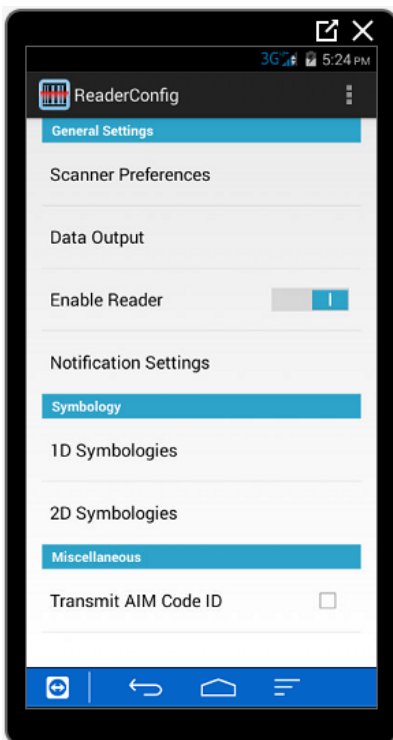


How to configure CipherLab Touch Computers (RS30 Series) for MobileNAV Android application

Configure CipherLab Touch Computer

- Launch **ReaderConfig** application
- Go to **Data Output**
- Go to **Keyboard Emulation** and select **“None”**



Configure Mobilenav

- Launch **MobileNAV** application
- Log into online or offline
- Click on main menu(MobileNAV icon on the top left)
 - a. Select **Settings**
 - b. Barcode mode: **device-specific**
 - c. click on **Configure...** button
 - i. Intent action: **com.cipherlab.barcodebaseapi.PASS_DATA_2_APP**
 - ii. Intent category: (leave empty)
 - iii. Data id: **Decoder_Data**

